

sunlite®

INSTALLATION INSTRUCTIONS

97087-SU | LFX/RWP/40W/50K | LED ROTATABLE WALLPACK FIXTURE
 97088-SU | LFX/RWP/60W/50K | LED ROTATABLE WALLPACK FIXTURE
 97089-SU | LFX/RWP/80W/50K | LED ROTATABLE WALLPACK FIXTURE

Please read and understand this entire manual before attempting to assemble, operate or install the product.

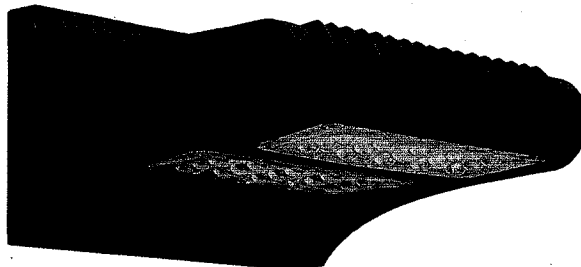
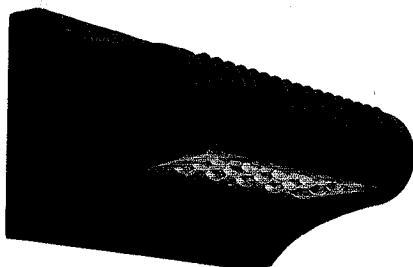
WARNING: Avoid fire or electrical shock. Min 75°C supply conductor. Follow installation instructions carefully. If unsure about electrical installation, consult a qualified electrician. Wear rubber-soled shoes and work on a sturdy ladder. Ground fixture to avoid potential electrical shock.



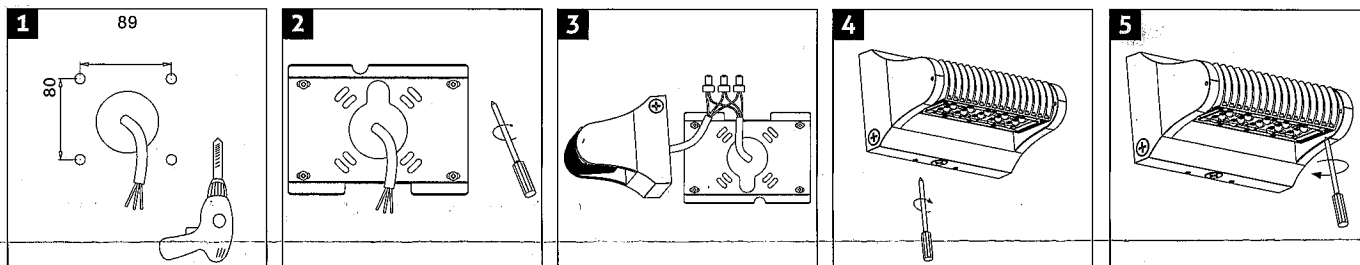
CAUTION: Turn off the power at fuse or circuit breaker box before installation and maintenance to avoid electric shock. Fixture must be installed according to National Electric Code and local building codes. If you are unsure about wiring consult a qualified electrician. THIS FIXTURE BODY IS ONE PIECE, DO NOT DISASSEMBLE OR MAKE ALTERATIONS. Suitable for wet locations.

This device complies with part 15 of the FCC Rules. Operation is subject to the following two conditions: (1) this device may not cause harmful interference, and (2) this device must accept any interference received, including that may cause undesired operation.

Retain these instructions for future maintenance reference.

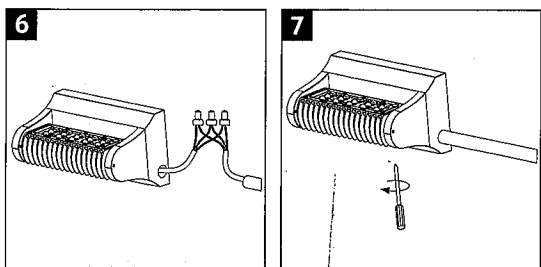


Installation Instructions



1. Drill holes in the wall corresponding to the holes in the mounting bracket and insert wall anchors.
2. Align mounting bracket with holes, insert and tighten screws.
3. Connect fixture wires to supply wires using wire nuts (*L to L, N to N, G to G*).
4. Install fixture onto mounting bracket and secure with screws on bottom of fixture.
5. Adjust angle of light and tighten screws.

Alternate installation using surface mounted wiring conduit.



Complete steps 1 & 2 above.

6. Install fixture onto mounting bracket and secure with screws on bottom of fixture. Connect fixture wires from the side to supply wires using wire nuts (*L to L, N to N, G to G*).
7. Tighten pipe to fixture. Adjust angle of light and tighten screws.

Sunshine Lighting Company

744 Clinton Street Brooklyn, NY 11231, USA

T. 718.768.7000

F. 718.768.0970

www.sunlite.com